



Afterglow DMX512 Lighting Control Interface



USB Driver Installation Guide

Doc Revision 1.1
11/10/2006

Contents

<i>Contents</i>	2
1. INTRODUCTION	3
1.1. CONDITIONS OF USE	3
1.2. SUPPORTED OPERATING SYSTEMS	3
1.3. HARDWARE INSTALLATION	3
1.4. SYSTEM REQUIREMENTS	3
2. INSTALLATION	4
2.1. USB DRIVER INSTALLATION	4

1. INTRODUCTION

To use the USB versions of any of the Afterglow DMX Interface range you must install the Afterglow USB driver software.

1.1. Conditions of Use

The authors accept no responsibility for any damage that may arise from the use of any supplied software.

1.2. Supported Operating Systems

The USB Driver has been tested with:

- Windows XP
- Windows 2000
- Windows ME

With proper installation the USB Driver should also run on Windows 98.

1.3. Hardware Installation

Connect the Afterglow interface to a vacant USB port on your computer or USB Hub, using the supplied USB A>B cable or the built in cable.

1.4. System requirements

We recommend the following system specifications:

To control simple scenes, a minimum of:

- 200Mhz PC
- Screen resolution of 1024x768 pixels

To use audio control, a minimum of:

- 800Mhz PC
- Screen resolution of 1024x768 pixels

2. INSTALLATION

To minimise the risk of encountering problems, please read and follow the instructions in this manual thoroughly.

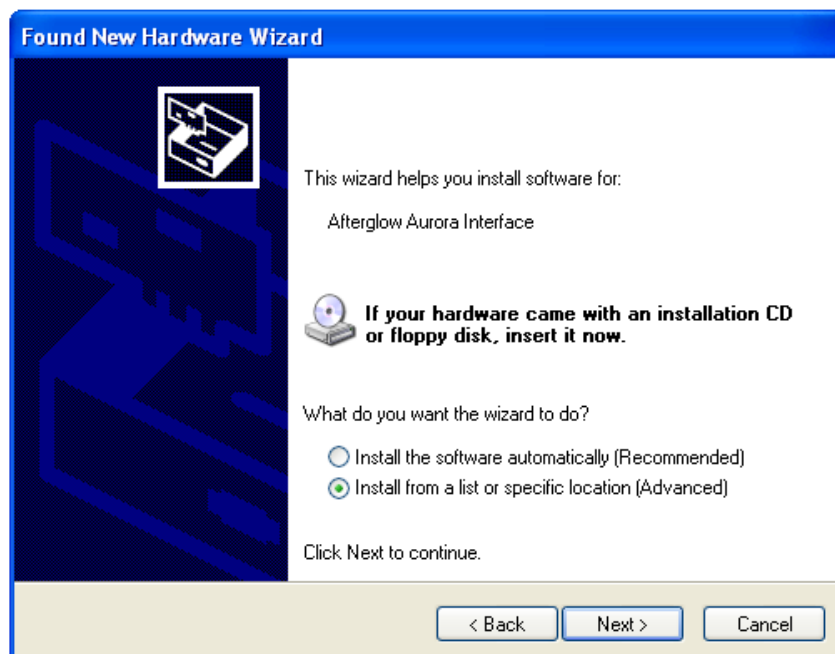
2.1. USB Driver Installation

To install the USB Driver you must connect the DMX Interface to a vacant USB port on your PC or USB Hub

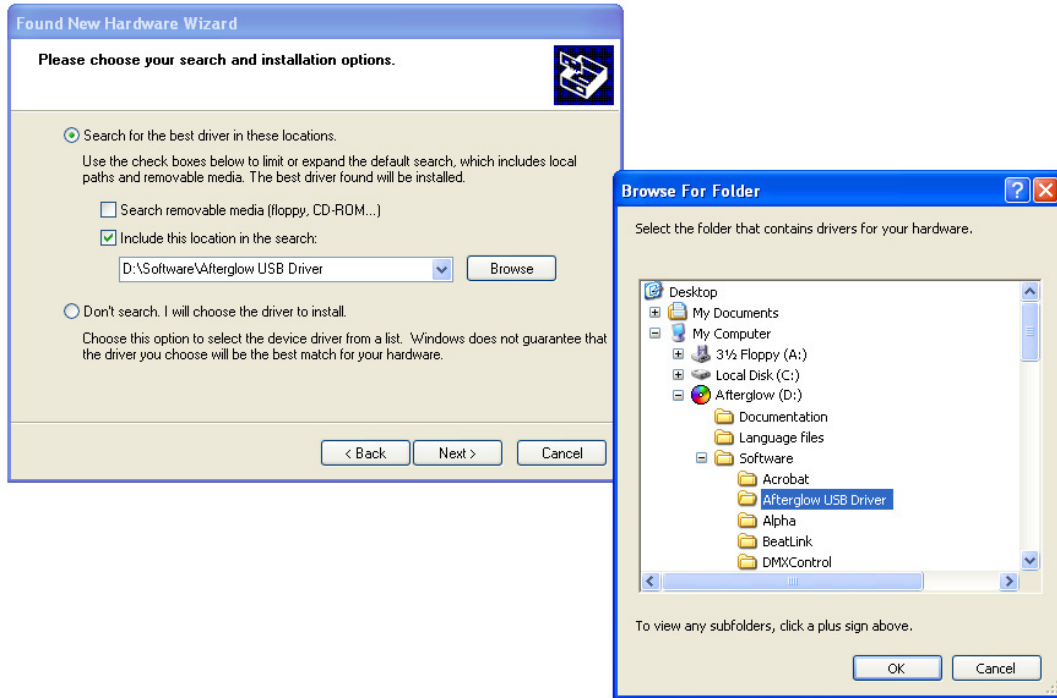
- The Found New Hardware Wizard should detect the unit as an Afterglow DMX device and prompt for driver installation.
- If the Wizard asks to connect to Windows Update to search for a driver select the 'No, not this time' option and click Next



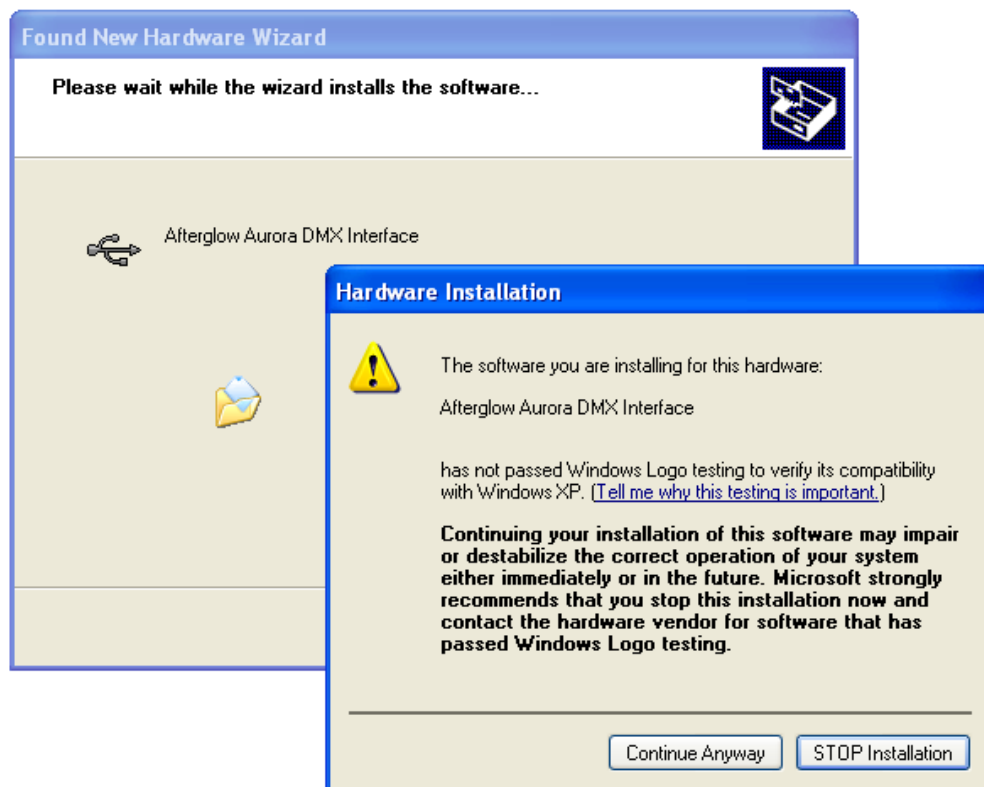
- Choose to 'Install from a list or specific location (Advanced)' and click Next



- Select the 'Search for the best driver in these locations' option and ensure that the 'Include this location in the search:' box is ticked.
- Browse to your CD drive, then highlight *Software > Afterglow USB Driver* and click Ok then Next



- Click on 'Continue Anyway' if the software warns you that the software has not passed Windows Logo Testing.



The driver files should install automatically

Click Finish and the USB Drivers should be installed and your DMX Interface will be ready to use.

